



MTS VALIANT

TECHNICAL SPECIFICATIONS

GENERAL

Type	Shoalbuster 2709
Classification	Bureau Veritas • Hull • Mach • / Unrestricted Navigation / AUT-UMS (SS)
IMO Number	9476044
Year Built	2008 - Damen Shipyard, NL
Flag	Dutch
Port of Registry	Vlissingen
Call Sign	PDQG
MMSI	246304000

DIMENSIONS

Length Overall	27,00 m
Breadth Overall	9,65 m
Minimum Draft	2,20 m
Operating Draft	2,60 m
Maximum Draft	2,85 m
Maximum Draft	8,50 m
Maximum Draft	15,20 m
Gross Tonnage	221 t
Net Tonnage	66 t

TANK CAPACITY

Fuel Oil	121,60 m ³
Fresh Water	30,10 m ³
Lubrication Oil	3,90 m ³
Hydraulic Oil	1,50 m ³
Dirty Oil	4,30 m ³
Sewage	2,20 m ³
Bilge Water	4,30 m ³

PERFORMANCE

Bollard Pull	40 t
Maximum Speed	12,00 knots
Economic Speed	8,00 knots

PROPULSION SYSTEM

Main Engines	2 x CAT Type 3512B TTA
Total Power	2.238 kW / 3040 bhp
Propulsion	2x Promarine fixed pitch propeller
Bowthruster	200 bhp, hydraulic driven

FIFI

System	
Type	
Capacity	

DECK CRANE

Type	Heila HLRM 140-3SL
Capacity	5,30 T @ 18,03 m

DECK EQUIPMENT

Free Deckspace	55,0 m ²
Deck Strength	5,0 t/m ²
Towing Winch	Ridderinkhof 40 t / 50 t (pull/hold) 750 m x 44 mm
Anchor Handling Winch	100 t / 120 t (pull/hold) 600 m x 40 mm
Tugger Winch	Promac 12 t
Towing Pins	WK-Hydraulics SWL 50 t
Pushbow	Full length rubber fendered
Stern Roller	SWL 50t

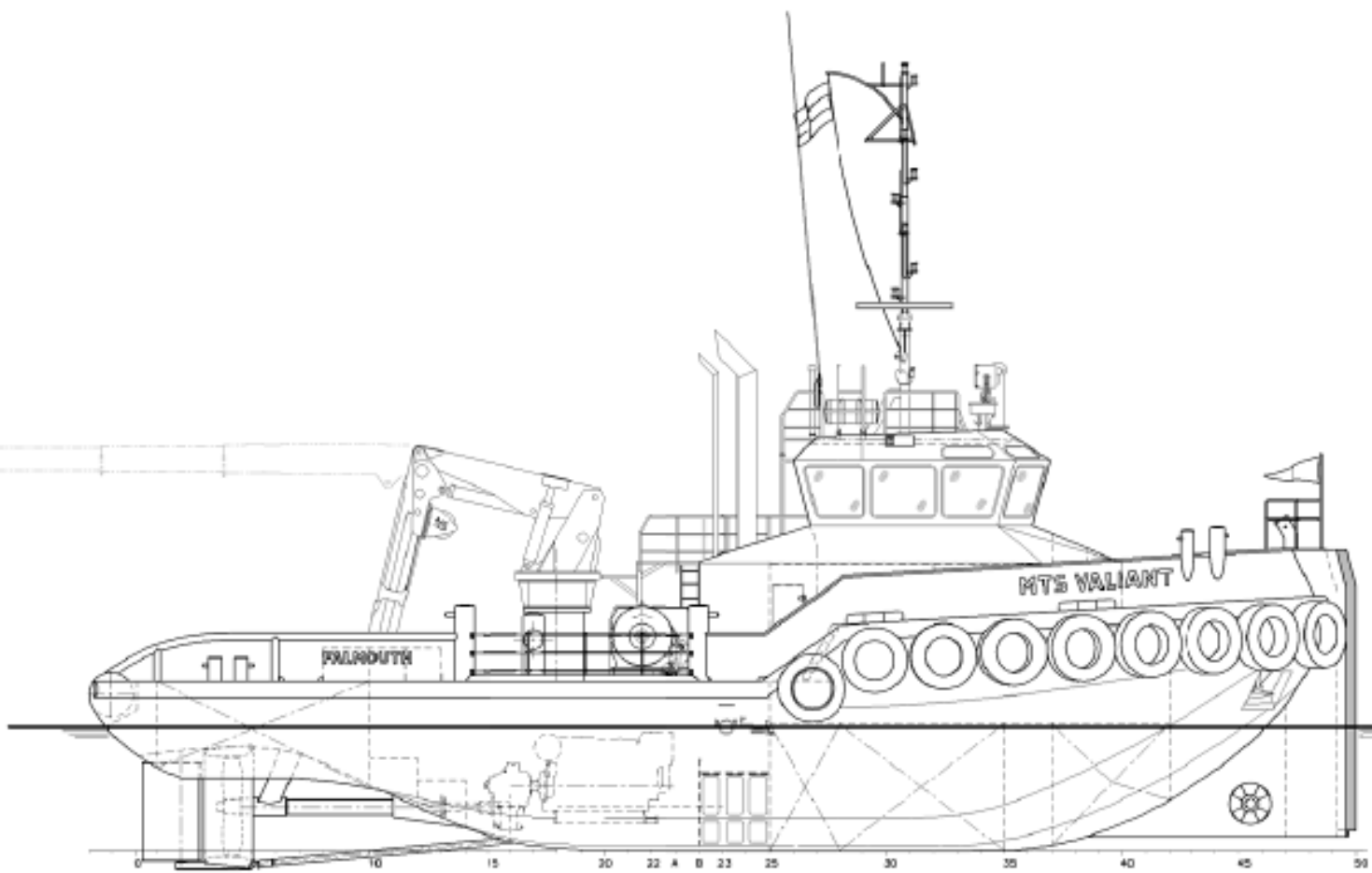
AUXILIARY EQUIPMENT

Main Generator Sets	2x Caterpillar C4.4 TA
Fuel Oil Transfer Pump	32 m ³ /h @ 1.5 bar
Fresh Water Transfer Pump	32 m ³ /h @ 1.5 bar
Fresh Water Maker	N/A
Air Compressor	1x ABAC 2 times 19m ³ /h 9 bar
Powerpack	1x CAT C9 TA

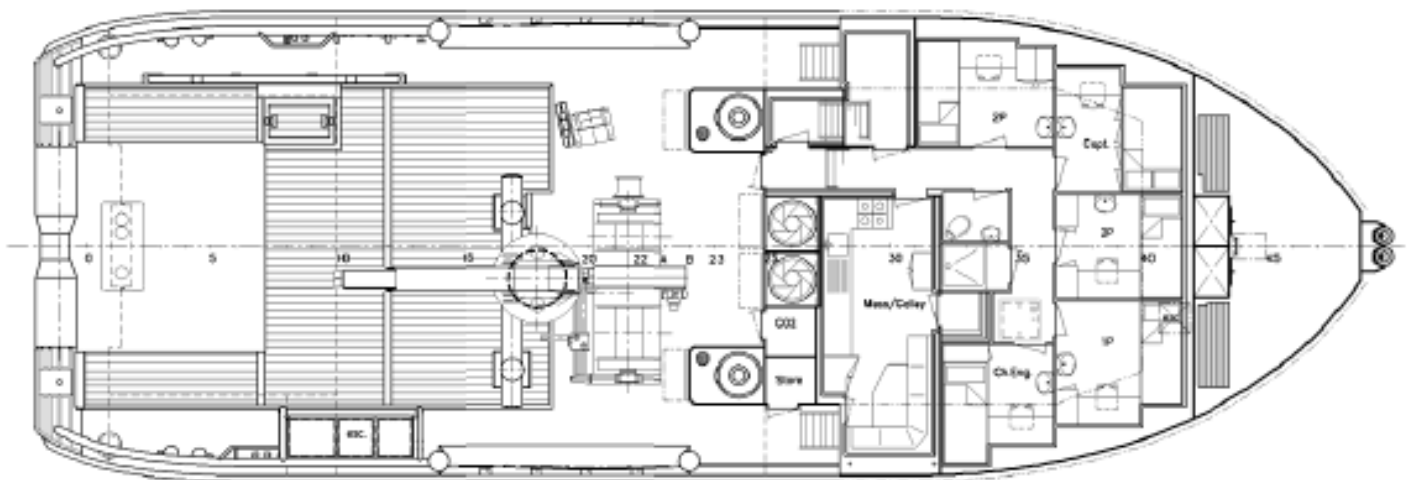
ACCOMMODATION

Persons	7
Single Cabin	3
Double Cabin	2
Air Conditioned	Yes





Maindeck



Below maindeck

