



# SEA PHANAGORIA

## TECHNICAL SPECIFICATIONS

### GENERAL

Type	EuroCarrier 2712
Classification	Bureau Veritas • Hull • Mach • / Unrestricted
	Navigation / AUT-UMS / DYNAPOS AM/AT
MMSI	245916000
IMO number	9868522
Year built	2022 - Neptune Hardinxveld, NL
Flag	Dutch
Port of registry	Vlissingen
Call sign	PEYU

### DIMENSIONS

Length	27.00 m
Breath overall	12.00 m
Minimum draft	2.72 m
Operational Draft	3.00 m
Maximum draft	3.66 m
Minimum air draft	9.5 m
Maximum air draft	18.5 m
Gross tonnage	292 t
Net tonnage	87 t

### TANK CAPACITY

Fuel oil	94.8 m <sup>3</sup>
Fresh water	35.6 m <sup>3</sup>
Lubrication oil	1.98 m <sup>3</sup>
Hydraulic oil	1.91 m <sup>3</sup>
Dirty oil	1.76 m <sup>3</sup>
Sewage	7.28 m <sup>3</sup>
Bilge water	10.67 m <sup>3</sup>

### PERFORMANCE

BollardPull	35 t
Maximum speed	10,00 knots
Economic speed	8,00 knots
Horse power	1938 kW

### PROPULSION SYSTEM

Main engines	2x Caterpillar C32 Tier III
Total power	1940 kW at 1800 RPM
Propulsion	2x fixed propellor - 1850mm dia in nozzle
Bowthruster	300kW, tunnel thruster in SB pushbow
Propellers	2 x 1850mm
Stern thruster	250kW

### DECK CRANE

Type	AFT: Heila HLRM 140-3S / FWD: Heila HLRM 280-3SL
Capacity	AFT: 26t @ 5.65m FWD: 28.8t @ 9.48m

### DECK EQUIPMENT

Free deckspace	138 m <sup>2</sup>
Deck strength	8.5t / m <sup>2</sup>
Tugger winch	15t
Pushbow	235N/mm <sup>2</sup>

### AUXILIARY EQUIPMENT

Main generator sets	2 x Volvo D13, 2 x 360kW @ 1500 rpm, 1 x Cat C4.4, 1 x 85kW @ 150 rpm
Fuel oil transfer pump	SMEM Type 7SM3 22Kw/2955rpm
Fresh water transfer pump	VICTORPUMPEN/580G3/T+F
Powerpack	ROTOR NL- 440/690V 90kW @ 185rpm

### ACCOMMODATION

Persons	14
Air conditioned	Yes

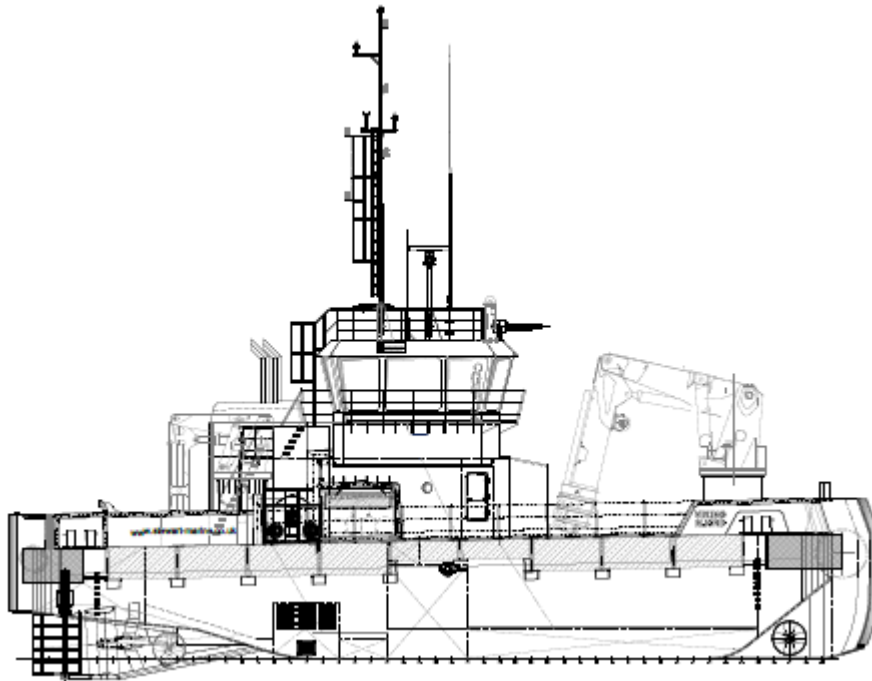
### TOWING EN ANCHOR HANDLING

AH towing winch	Tecnospirit 100t / 125t (pull/hold)
Anchor Handling Winch	Tecnospirit 50t / 75t (pull/hold)
Towing pins	Aft: manual guide pins & gob eye flush in deck Fwd: hydraulic guide pins & hydraulic chainstopper
Stern roller	dia 838mm, length 5m / BOW Roller: dia 1207mm, 6 m

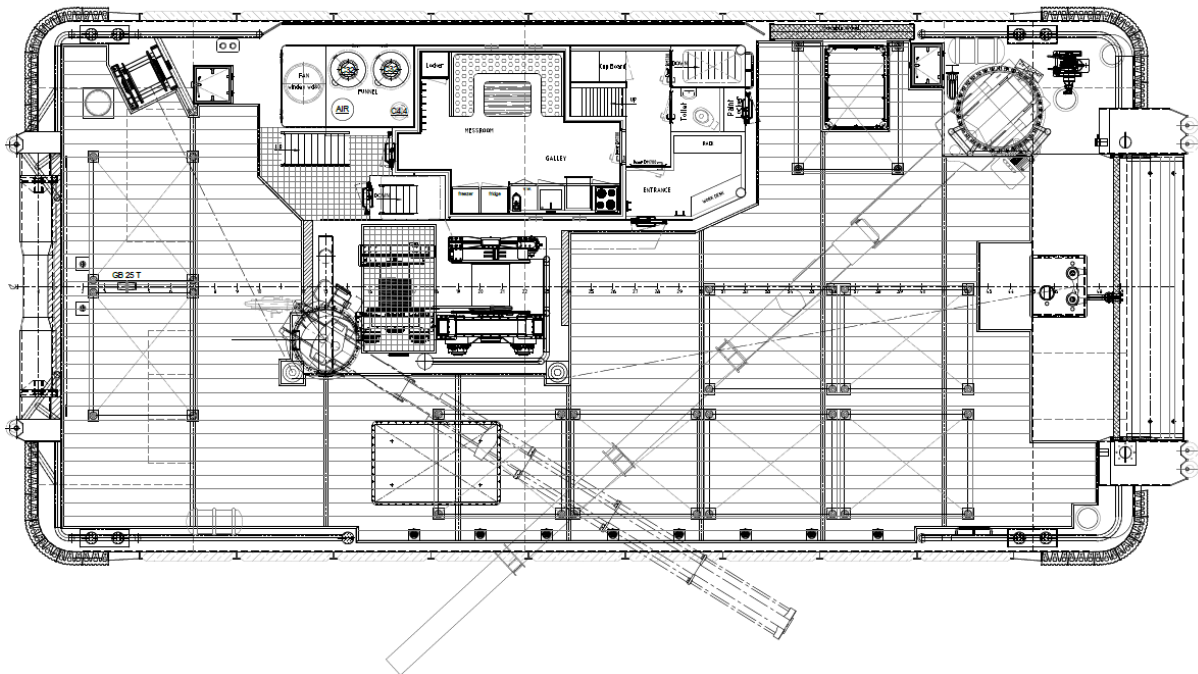
### ADDITIONAL INFORMATION

Additional information	Dynampic Positioning (Class 1)
------------------------	--------------------------------





MAINDECK



ENGINE ROOM

ACCOMMODATION

