

SEA INDIA

TECHNICAL SPECIFICATIONS



GENERAL

Type	Shoalbuster 3209
Classification	Bureau Veritas • Hull • Mach • Unrestricted navigation / AUT-UMS (SS) - Tug - Fire Fighting ship 1 - Water spraying
IMO Number	9760029
Year Built	2014 - Damen Albwardy, UAE
Flag	Dutch
Port of Registry	Vlissingen
Call Sign	PCOB
MMSI	244830656

DIMENSIONS

Length Overall	32,27 m
Breadth Overall	9,35 m
Minimum Draft	2,90 m
Operating Draft	3,00 m
Maximum Draft	3,20 m
Maximum Draft	10,30 m
Maximum Draft	16,85 m
Gross Tonnage	335 t
Net Tonnage	100 t

TANK CAPACITY

Fuel Oil	218,2 m ³
Fresh Water	40,9 m ³
Lubrication Oil	7,3 m ³
Hydraulic Oil	3,0 m ³
Dirty Oil	3,7 m ³
Sewage	3,3 m ³
Bilge Water	4,3 m ³

PERFORMANCE

Bollard Pull	49 t
Maximum Speed	11,60 knots
Economic Speed	8,50 knots

PROPULSION SYSTEM

Main Engines	2x CAT 3512 TAC
Total Power	2.610 kW / 3546 bhp
Propulsion	2x Solid screw propeller 5, 362 rpm
Bowthruster	350 bhp, hydraulic driven

FIFI

System	FIFI 1
Type	FFS 1200
Capacity	2x 1200 m ³ / hr

DECK CRANE

Type	Heila HLRM 0170-4SL
Capacity	7,9 t @ 15,90 m

DECK EQUIPMENT

Free Deckspace	72,0 m ²
Deck Strength	5,0 t/m ²
Towing Winch	DMT Waterfall 50 t / 150 t (pull/hold) 800 m x 44 mm
Anchor Handling Winch	100 t / 150 t (pull/hold) 700 m x 44 mm
Tugger Winch	Dromec 12 t
Towing Pins	Shark Jaw Fork SWL 75 t
Pushbow	Full length rubber fendered
Stern Roller	SWL 100t

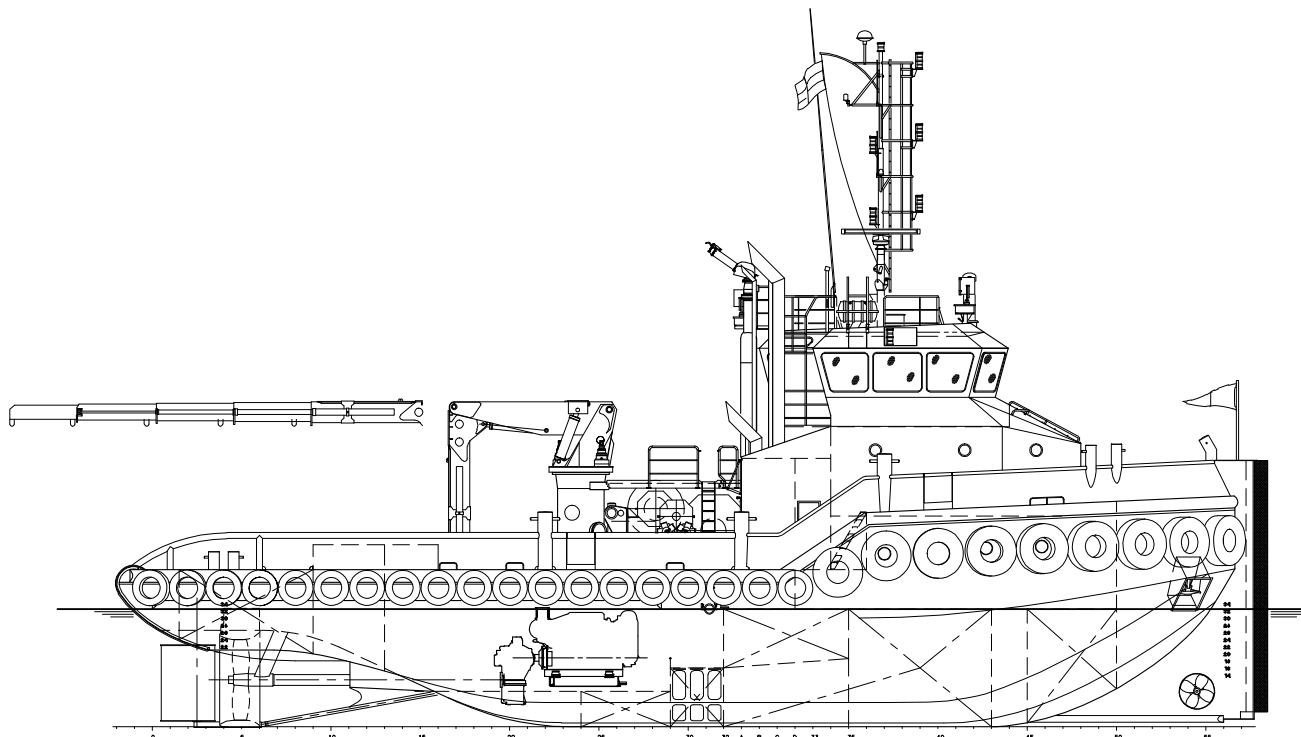
AUXILIARY EQUIPMENT

Main Generator Sets	2x CAT C4.4 TA
Fuel Oil Transfer Pump	50m ³ /h @ 4.8 bar
Fresh Water Transfer Pump	50m ³ /h @ 4.8 bar
Fresh Water Maker	HEM H25F3HEM 25/1300F3 4,8 t/24h
Air Compressor	2x ABAC 19 m ³ /h 9 bar
Powerpack	1x CAT C18 TAB

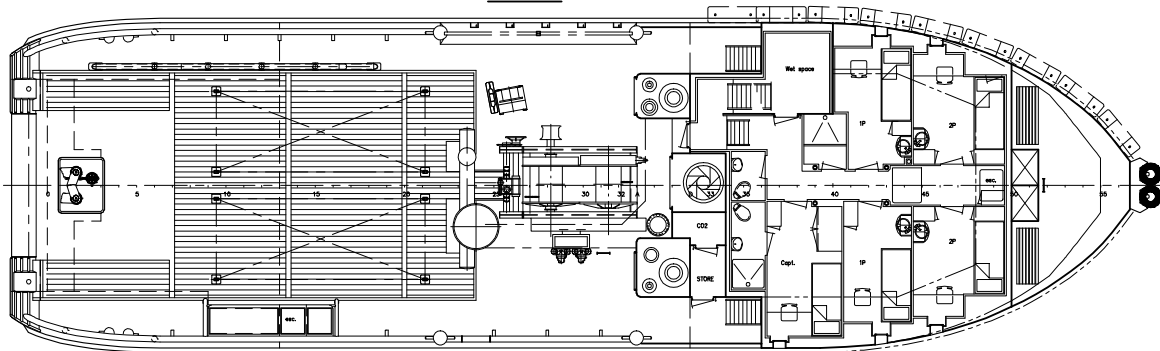
ACCOMMODATION

Persons	7
Single Cabin	3
Double Cabin	2
Air Conditioned	Yes





Maindeck



Below maindeck

