



SEA VANQUISH

TECHNICAL SPECIFICATIONS

GENERAL

Type	AHT Damen Stantug
Classification	Bureau Veritas Hull • Mach • AUT-UMS - Tug - Fire Fighting ship 1 - Water spraying / unrestricted
MMSI	246702000
IMO number	9559573
Year built	2013
Flag	Dutch
Port of registry	Vlissingen
Call sign	PGBN

DIMENSIONS

Length	30,02 m
Breath overall	8,80 m
Minimum draft	4,20 m
Operational Draft	4,30 m
Maximum draft	4,40 m
Minimum air draft	16,00 m
Maximum air draft	16,00 m
Gross tonnage	272 t
Net tonnage	81 t

PERFORMANCE

BollardPull	71,0 t
Maximum speed	13,4 knots
Economic speed	7 knots
Horse power	4750

TANK CAPACITY

Fuel oil	135,10 m³
Fresh water	20,60 m³
Lubrication oil	3,90 m³
Hydraulic oil	1,50 m³
Dirty oil	2,50 m³
Sewage	1,80 m³
Bilge water	2,90 m³

PROPULSION SYSTEM

Main engines	2x CAT Type 3516B TA HD/B
Total power	3,542 KW / 4750 bhp
Propulsion	2x Kaplan II fixed pitch propellers
Bowthruster	350 bhp, electrical driven

FIFI

System	FIFI 1
Type	Caterpillar 3406E TA
Capacity	2x600 m³ / hr

DECK CRANE

Type	Heila 25/4S
Capacity	1,70t @ 12,30m

DECK EQUIPMENT

Free deckspace	66 m²
Deck strength	3,0 t/m²
Tugger winch	Brevini 8 t
Pushbow	Full length rubber fendered



SEACONTRACTORS

The information contained in this data sheet is for guidance purposes only and may be subject to changes

AUXILIARY EQUIPMENT

Main generator sets	2x CAT C4.4 TA
Fuel oil transfer pump	32 m ³ / hr @ 1,5 bar
Fresh water transfer pump	32 m ³ / hr @ 1,5 bar

ACCOMMODATION

Persons	8
Single cabin	2
Double cabin	3
Air conditioned	Yes

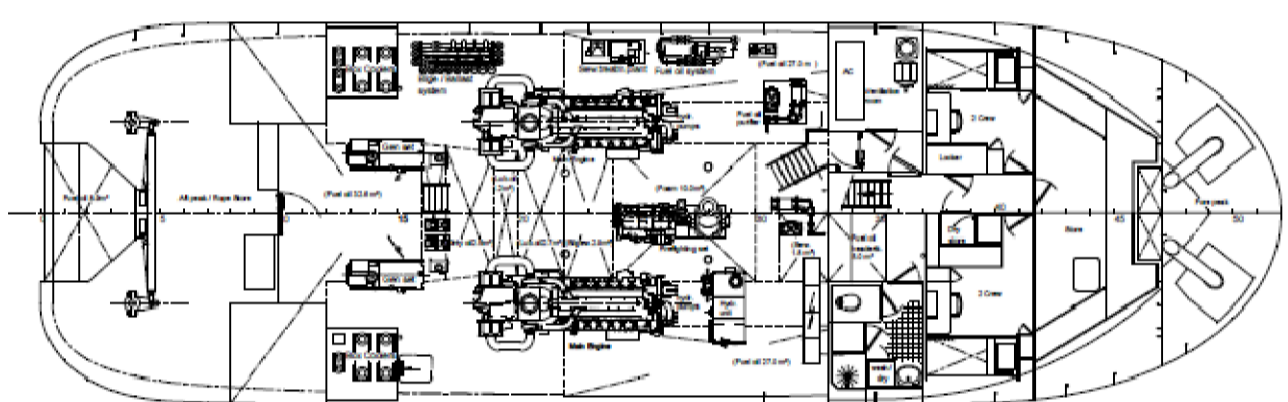
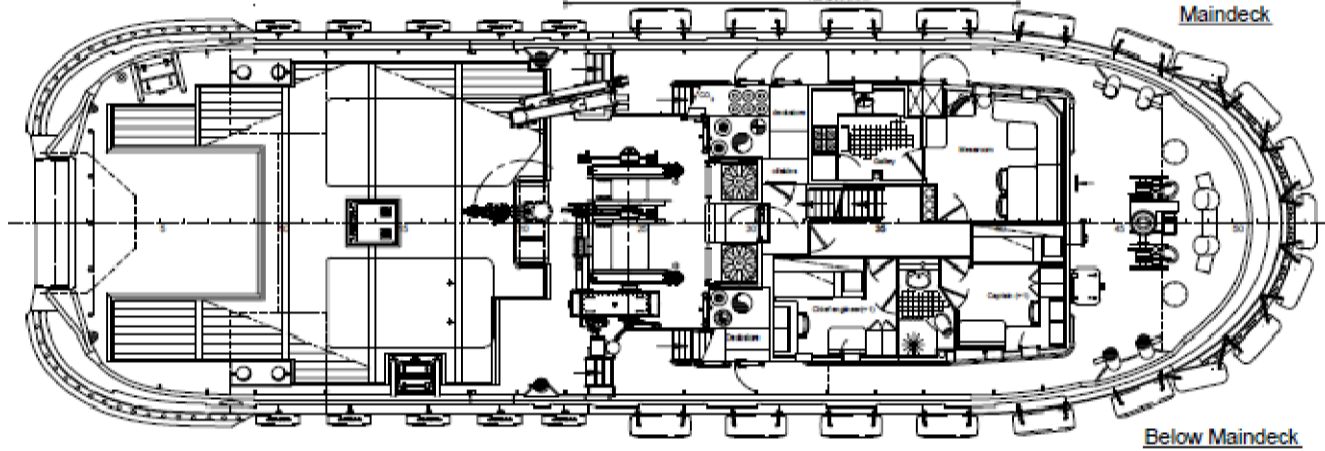
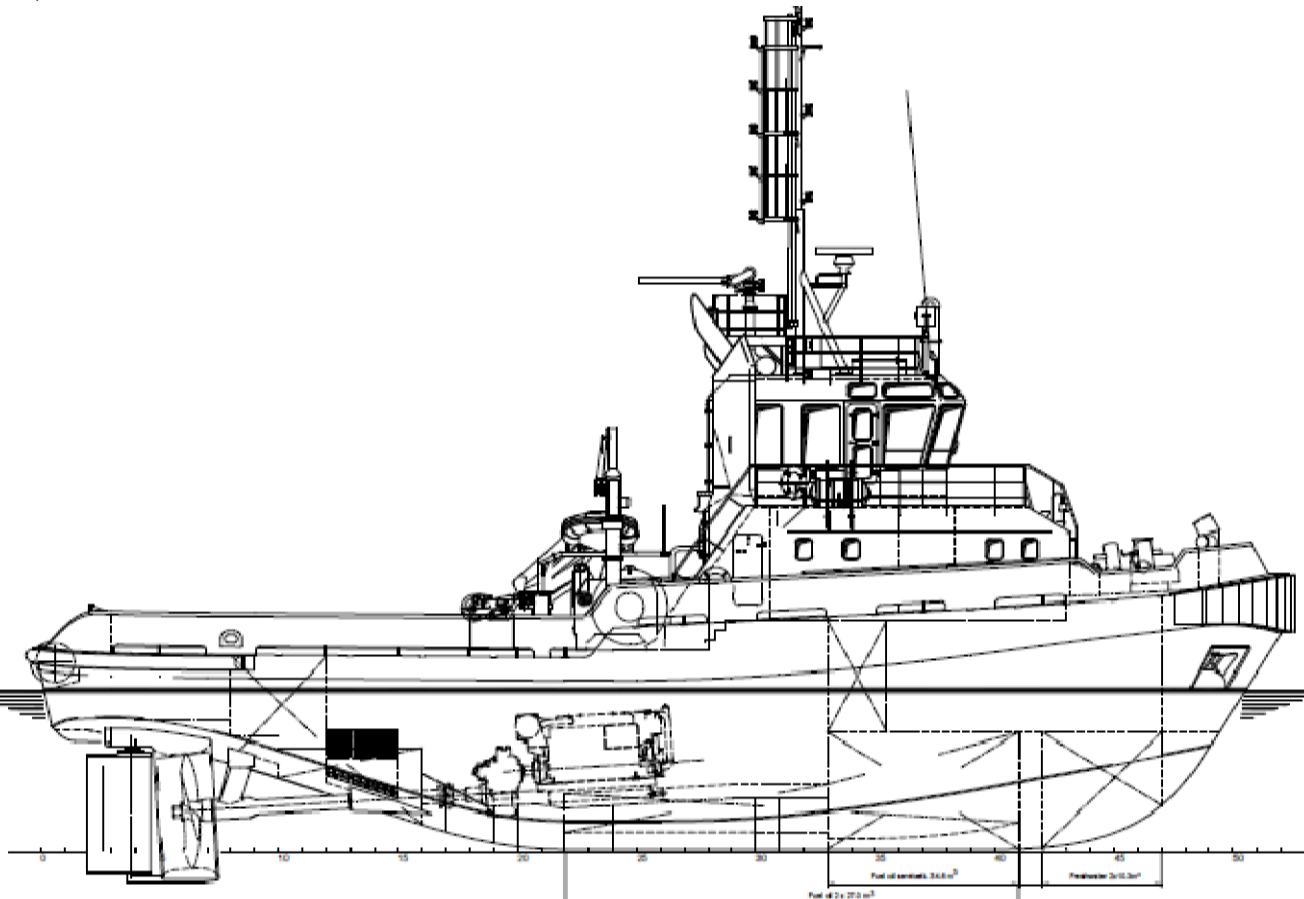
TOWING EN ANCHOR HANDLING

Towing winch	DMT Waterfall 40 t / 120 t (pull/hold) 750 m x 48 mm
Anchor Handling Winch	40 t / 120 t (pull/hold) 500 m x 48 mm
Towing pins	Karmoy SWL 100 t
Stern roller	SWL 35 t



SEA VANQUISH

SEA VANQUISH



SEACONTRACTORS

The information contained in this data sheet is for guidance purposes only and may be subject to changes